

Install Bepprt Seagull Driver on Windows

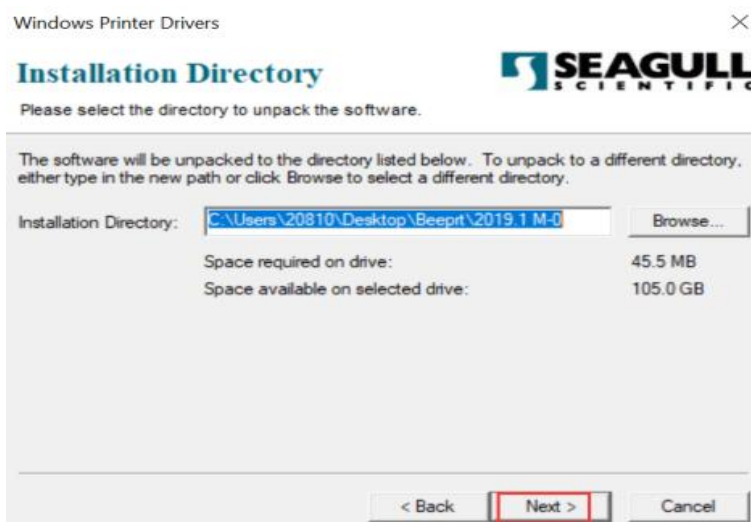
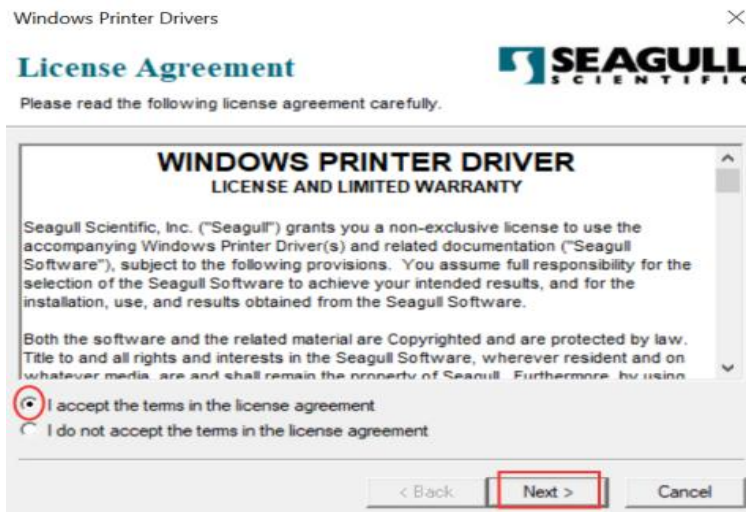
1. Please turn on the printer's power. Connect to your computer via USB.

If you need to download the printer driver, please check the link to install the printer driver.

<https://www.seagullscientific.com/downloads/printer-drivers/bepprt-by-426/>



2. Follow the prompts to install the driver.



Installation Information



Follow the instructions below to install the software.

Instructions

After the drivers are unpacked, install them using the Driver Wizard.

Options

- Run Driver Wizard after unpacking drivers
- Read installation instructions (contained in 'Installation_Instructions.html')

< Back Finish Cancel



Welcome to the Seagull Driver Wizard

This wizard helps you install and remove printer drivers.

What would you like to do?

- Install printer drivers
- Remove printer drivers

Please save all work and close all applications before proceeding. This process may require Windows to be restarted.

< Back Next > Cancel

Connect Printer

The printer should be connected before continuing installation.



How is this printer going to be attached?

- USB
- Network (Ethernet or WiFi)
- Bluetooth
- Other (such as Parallel or Serial)

Instructions:
1. Connect your printer to the PC.
2. Turn the printer on.
3. Press Next to continue.

< Back Next > Cancel

The model shown here should be BY-480 or BY-480BT.(The picture above is for reference only)

Seagull Driver Wizard

Specify Printer Model
The manufacturer and model determine which printer driver to use.

Specify the model of your printer.

Printer Model

- Beeprt BY-368BT
- Beeprt BY-426
- Beeprt BY-426BT
- Beeprt BY-480
- Beeprt BY-480BT
- Beeprt BY-482
- Beeprt BY-482BT
- Beeprt BY-482G

Source: C:\Users\Pc\Desktop\Seagull\2022.2
Version: 2022.2.0 (06/29/2022)

Browse...

< Back Next > Cancel

Seagull Driver Wizard

Specify Port
A port is used to connect a printer to the computer.

Specify the port that you are using. If you are connecting using TCP/IP or another port type not listed below, create a new port.

Port	Type
FILE:	Local Port
USB001	USB 虚拟打印机端口
USB002	USB 虚拟打印机端口
USB003	USB 虚拟打印机端口
USB004	USB 虚拟打印机端口
USB005	USB 虚拟打印机端口
USB006	USB 虚拟打印机端口

Create Port... Configure Port...

< Back Next > Cancel

Seagull Driver Wizard

Specify Printer Name
Names are used to identify the printer on this computer and on the network.

Enter a name for this printer.

Printer name: Beeprt BY-480BT

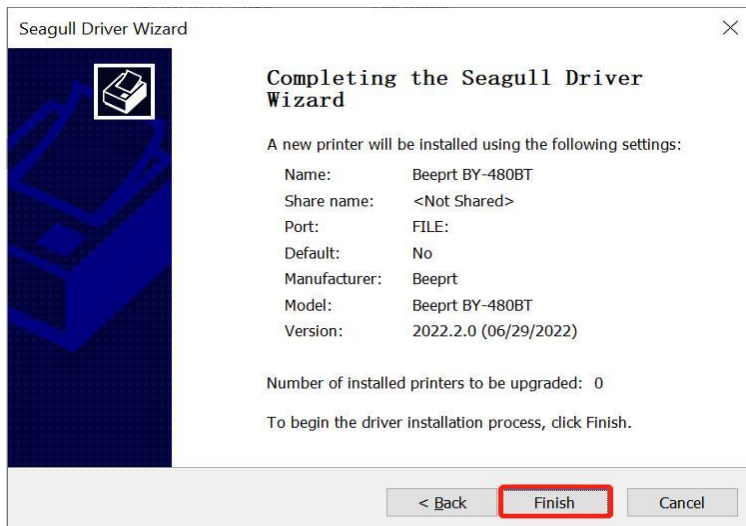
Use this printer as the default printer

Specify whether or not you want to share this printer with other network users. When sharing, you must provide a share name.

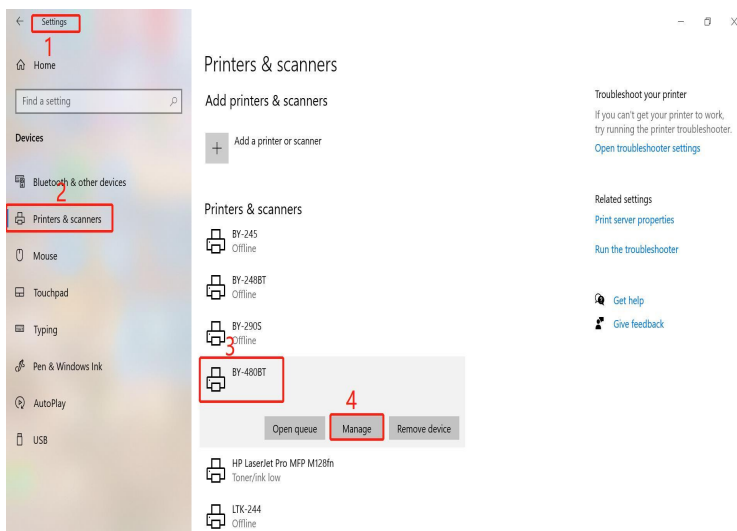
Do not share this printer

Share name: Beeprt_BY-480BT

< Back Next > Cancel



3. Now, you can print your test page follow below steps.



BY-480BT

Manage your device

 [Get help](#)

This device has a few different functions. Pick one to manage settings for that function.

BY-480BT ▾

Printer status: Offline

[Open print queue](#)

[Print a test page](#)

[Run the troubleshooter](#)

[Printer properties](#)

[Printing preferences](#)

[Hardware properties](#)

